



# PRODUCT CATALOGUE



**INDUSTRIAL  
FLOORING**

S A F E T Y  
B A R R I E R S

<https://industrialflooring.pl/en/>

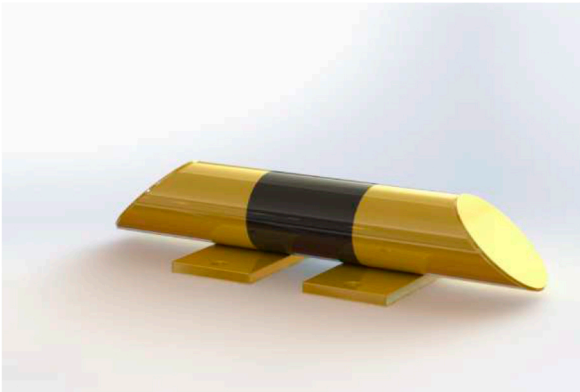
# SAFETY BARRIERS

We make the safety barriers from high-quality steel and provide them with anti-corrosion coating, which ensures the maximal service life of the product. The surface of the barrier has 80 - 120 microns of the powder color RAL1023 (traffic yellow) and is equipped with reflective hatching, which allows to improve the visibility even in the dark. In combination with other types of barriers, you can create a comprehensive system of protecting the equipment and people throughout your company's premises.



# Low level barriers

Low level barriers are manufactured in both straight and corner designs and are used to protect corners, columns and other areas where collisions with handling equipment or personal injury could occur.



## Low level protection barrier – DP OW01

Material: steel  
Colour: yellow / reflective black  
Handling equipment: electric pallet jack  
Impact resistance: increased  
Diameter: 76 mm  
Length: 400 mm  
Height: 86 mm  
Wall thickness: 3 mm  
Foot dimension: 150 × 75 × 10 mm  
Weight: 5 kg  
Surface treatment: powder paint  
Suitable use: indoor and outdoor areas



## Low level protection barrier – DP OW02

Material: steel  
Colour: yellow / reflective black  
Handling equipment: electric pallet jack  
Impact resistance: increased  
Diameter: 76 mm  
Length: 800 mm  
Height: 86 mm  
Wall thickness: 3 mm  
Foot dimension: 150 × 75 × 10 mm  
Weight: 7 kg  
Surface treatment: powder paint  
Suitable use: indoor and outdoor areas



## Low level protection barrier – DP OW03

Material: steel  
Colour: yellow / reflective black  
Handling equipment: electric pallet jack  
Impact resistance: increased  
Diameter: 76 mm  
Length: 1200 mm  
Height: 86 mm  
Wall thickness: 3 mm  
Foot dimension: 150 × 75 × 10 mm  
Weight: 10 kg  
Surface treatment: powder paint  
Suitable use: indoor and outdoor areas



## Corner low level protection barrier – DP OW04

Material: steel  
Colour: yellow / reflective black  
Handling equipment: electric pallet jack  
Impact resistance: increased  
Diameter: 76 mm  
Length: 600 mm  
Height: 86 mm  
Width: 600 mm  
Wall thickness: 3 mm  
Foot dimension: 150 × 75 × 10 mm  
Weight: 10 kg  
Surface treatment: powder paint  
Suitable use: indoor and outdoor areas

# Arched barriers

## Corner arched barriers

are designed for indoor and outdoor use and are mainly used to protect corners and columns that could otherwise be damaged by handling equipment (hydraulic handling equipment, pallet trucks, etc.)



### Corner arched barrier – DP LGO901

Material: steel  
Colour: yellow  
Handling equipment: manual handling equipment  
Impact resistance: basic  
Diameter: 60 mm  
Length: 400 mm  
Height: 300 mm  
Width: 400 mm  
Wall thickness: 3 mm  
Foot dimension: 120 × 120 × 10 mm  
Weight: 9 kg  
Surface treatment: powder paint  
Suitable use: indoor and outdoor areas



### Corner arched barrier – DP LGO902

Material: steel  
Colour: yellow  
Handling equipment: electric pallet jack  
Impact resistance: increased  
Diameter: 76 mm  
Length: 400 mm  
Height: 500 mm  
Width: 400 mm  
Wall thickness: 3 mm  
Foot dimension: 120 × 120 × 10 mm  
Weight: 10 kg  
Surface treatment: powder paint  
Suitable use: indoor and outdoor areas



## Corner arched barrier – DP OPL01

Material: steel  
Colour: yellow / reflective black  
Handling equipment: electric pallet jack  
Impact resistance: increased  
Diameter: 76 mm  
Length: 500 mm  
Height: 350 mm  
Width: 500 mm  
Foot dimension: 120 × 120 × 10 mm  
Wall thickness: 3 mm  
Weight: 11 kg  
Surface treatment: powder paint  
Suitable use: indoor and outdoor areas



## Corner arched barrier – DP OPL02

Material: steel  
Colour: yellow / reflective black  
Handling equipment: electric pallet jack  
Impact resistance: increased  
Diameter: 76 mm  
Length: 500 mm  
Height: 600 mm  
Width: 500 mm  
Foot dimension: 120 × 120 × 10 mm  
Wall thickness: 3 mm  
Weight: 19 kg  
Surface treatment: powder paint  
Suitable use: indoor and outdoor areas



## Corner arched barrier – DP OPL03

Material: steel  
Colour: yellow / reflective black  
Handling equipment: electric pallet jack  
Impact resistance: increased  
Diameter: 76 mm  
Length: 500 mm  
Height: 1000 mm  
Width: 500 mm  
Foot dimension: 120 × 120 × 10 mm  
Wall thickness: 3 mm  
Weight: 26 kg  
Surface treatment: powder paint  
Suitable use: indoor and outdoor areas



## Corner arched barrier – DP OPL04

Material: steel  
Colour: yellow / reflective black  
Handling equipment: electric pallet jack  
Impact resistance: increased  
Diameter: 76 mm  
Length: 500 mm  
Height: 1200 mm  
Width: 500 mm  
Foot dimension: 120 × 120 × 10 mm  
Wall thickness: 3 mm  
Weight: 43 kg  
Surface treatment: powder paint  
Suitable use: indoor and outdoor areas



## Corner arched barrier – DP OPL05

Material: steel  
Colour: yellow / reflective black  
Handling equipment: forklift  
Impact resistance: high  
Diameter: 108 mm  
Length: 600 mm  
Height: 600 mm  
Width: 600 mm  
Foot dimension: 180 × 180 × 10 mm  
Wall thickness: 3 mm  
Weight: 36 kg  
Surface treatment: powder paint  
Suitable use: indoor and outdoor areas



## Corner arched barrier – DP OPL06

Material: steel  
Colour: yellow / reflective black  
Handling equipment: forklift  
Impact resistance: high  
Diameter: 108 mm  
Length: 600 mm  
Height: 1200 mm  
Width: 600 mm  
Foot dimension: 180 × 180 × 10 mm  
Wall thickness: 3 mm  
Weight: 56 kg  
Surface treatment: powder paint  
Suitable use: indoor and outdoor areas

# Straight arched barriers

are used for indoor and outdoor areas. They are mainly used to define the space for the movement of handling equipment (hydraulic handling equipment, pallet trucks, etc.)



## Straight arched barrier – DP LGOR01

Material: steel  
Colour: yellow  
Handling equipment: manual handling equipment  
Impact resistance: basic  
Diameter: 60 mm  
Length: 1000 mm  
Height: 300 mm  
Foot dimension: 120 × 120 × 10 mm  
Wall thickness: 3 mm  
Weight: 11 kg  
Surface treatment: powder paint  
Suitable use: indoor and outdoor areas



## Straight arched barrier – DP LGOR02

Material: steel  
Colour: yellow  
Handling equipment: electric pallet jack  
Impact resistance: increased  
Diameter: 76 mm  
Length: 1000 mm  
Height: 500 mm  
Foot dimension: 120 × 120 × 10 mm  
Wall thickness: 3 mm  
Weight: 15 kg  
Surface treatment: powder paint  
Suitable use: indoor and outdoor areas



## Straight arched barrier – DP LGOR03

Material: steel  
Colour: yellow  
Handling equipment: manual handling equipment  
Impact resistance: basic  
Diameter: 60 mm  
Length: 1000 mm  
Height: 600 mm  
Foot dimension: 120 × 120 × 10 mm  
Wall thickness: 3 mm  
Weight: 13 kg  
Surface treatment: powder paint  
Suitable use: indoor and outdoor areas





### **Straight arched barrier – DP LGOR04**

Material: steel  
Colour: yellow  
Handling equipment: electric pallet jack  
Impact resistance: increased  
Diameter: 76 mm  
Length: 1000 mm  
Height: 1000 mm  
Foot dimension: 120 × 120 × 10 mm  
Wall thickness: 3 mm  
Weight: 19 kg  
Surface treatment: powder paint  
Suitable use: indoor and outdoor areas



### **Straight arched barrier – DP OPP03**

Material: steel  
Colour: yellow / reflective black  
Handling equipment: electric pallet jack  
Impact resistance: increased  
Diameter: 76 mm  
Length: 300 mm  
Height: 350 mm  
Foot dimension: 120 × 120 × 10 mm  
Wall thickness: 3 mm  
Weight: 10 kg  
Surface treatment: powder paint  
Suitable use: indoor and outdoor areas



### **Straight arched barrier – DP OPP04**

Material: steel  
Colour: yellow / reflective black  
Handling equipment: electric pallet jack  
Impact resistance: increased  
Diameter: 76 mm  
Length: 500 mm  
Height: 350 mm  
Foot dimension: 120 × 120 × 10 mm  
Wall thickness: 3 mm  
Weight: 11 kg  
Surface treatment: powder paint  
Suitable use: indoor and outdoor areas



## Straight arched barrier – DP OPP05

Material: steel  
Colour: yellow / reflective black  
Handling equipment: electric pallet jack  
Impact resistance: increased  
Diameter: 76 mm  
Length: 700 mm  
Height: 350 mm  
Foot dimension: 120 × 120 × 10 mm  
Wall thickness: 3 mm  
Weight: 12 kg  
Surface treatment: powder paint  
Suitable use: indoor and outdoor areas



## Straight arched barrier – DP OPP06

Material: steel  
Colour: yellow / reflective black  
Handling equipment: electric pallet jack  
Impact resistance: increased  
Diameter: 76 mm  
Length: 1000 mm  
Height: 350 mm  
Foot dimension: 120 × 120 × 10 mm  
Wall thickness: 3 mm  
Weight: 14 kg  
Surface treatment: powder paint  
Suitable use: indoor and outdoor areas



## Straight arched barrier – DP OPP07

Material: steel  
Colour: yellow / reflective black  
Handling equipment: electric pallet jack  
Impact resistance: increased  
Diameter: 76 mm  
Length: 1500 mm  
Height: 350 mm  
Foot dimension: 120 × 120 × 10 mm  
Wall thickness: 3 mm  
Weight: 17 kg  
Surface treatment: powder paint  
Suitable use: indoor and outdoor areas



## Straight arched barrier – DP OPP08

Material: steel  
Colour: yellow / reflective black  
Handling equipment: electric pallet jack  
Impact resistance: increased  
Diameter: 76 mm  
Length: 500 mm  
Height: 600 mm  
Foot dimension: 120 × 120 × 10 mm  
Wall thickness: 3 mm  
Weight: 13 kg  
Surface treatment: powder paint  
Suitable use: indoor and outdoor areas



## Straight arched barrier – DP OPP09

Material: steel  
Colour: yellow / reflective black  
Handling equipment: electric pallet jack  
Impact resistance: increased  
Diameter: 76 mm  
Length: 700 mm  
Height: 600 mm  
Foot dimension: 120 × 120 × 10 mm  
Wall thickness: 3 mm  
Weight: 14 kg  
Surface treatment: powder paint  
Suitable use: indoor and outdoor areas



## Straight arched barrier – DP OPP10

Material: steel  
Colour: yellow / reflective black  
Handling equipment: electric pallet jack  
Impact resistance: increased  
Diameter: 76 mm  
Length: 1000 mm  
Height: 600 mm  
Foot dimension: 120 × 120 × 10 mm  
Wall thickness: 3 mm  
Weight: 16 kg  
Surface treatment: powder paint  
Suitable use: indoor and outdoor areas



## Straight arched barrier – DP OPP11

Material: steel  
Colour: yellow / reflective black  
Handling equipment: electric pallet jack  
Impact resistance: increased  
Diameter: 76 mm  
Length: 1500 mm  
Height: 600 mm  
Foot dimension: 120 × 120 × 10 mm  
Wall thickness: 3 mm  
Weight: 19 kg  
Surface treatment: powder paint  
Suitable use: indoor and outdoor areas



## Straight arched barrier – DP OPP12

Material: steel  
Colour: yellow / reflective black  
Handling equipment: electric pallet jack  
Impact resistance: increased  
Diameter: 76 mm  
Length: 500 mm  
Height: 1000 mm  
Foot dimension: 120 × 120 × 10 mm  
Wall thickness: 3 mm  
Weight: 15 kg  
Surface treatment: powder paint  
Suitable use: indoor and outdoor areas



## Straight arched barrier – DP OPP13

Material: steel  
Colour: yellow / reflective black  
Handling equipment: electric pallet jack  
Impact resistance: increased  
Diameter: 76 mm  
Length: 700 mm  
Height: 1000 mm  
Foot dimension: 120 × 120 × 10 mm  
Wall thickness: 3 mm  
Weight: 16 kg  
Surface treatment: powder paint  
Suitable use: indoor and outdoor areas



## Straight arched barrier – DP OPP14

Material: steel  
Colour: yellow / reflective black  
Handling equipment: electric pallet jack  
Impact resistance: increased  
Diameter: 76 mm  
Length: 1000 mm  
Height: 1000 mm  
Foot dimension: 120 × 120 × 10 mm  
Wall thickness: 3 mm  
Weight: 18 kg  
Surface treatment: powder paint  
Suitable use: indoor and outdoor areas



## Straight arched barrier – DP OPP15

Material: steel  
Colour: yellow / reflective black  
Handling equipment: electric pallet jack  
Impact resistance: increased  
Diameter: 76 mm  
Length: 1500 mm  
Height: 1000 mm  
Foot dimension: 120 × 120 × 10 mm  
Wall thickness: 3 mm  
Weight: 22 kg  
Surface treatment: powder paint  
Suitable use: indoor and outdoor areas



## Straight arched barrier – DP OPP19

Material: steel  
Colour: yellow / reflective black  
Handling equipment: electric pallet jack  
Impact resistance: increased  
Diameter: 76 mm  
Length: 1500 mm  
Height: 1200 mm  
Foot dimension: 120 × 120 × 10 mm  
Wall thickness: 3 mm  
Weight: 23 kg  
Surface treatment: powder paint  
Suitable use: indoor and outdoor areas



## Straight arched barrier – DP OPP20

Material: steel  
Colour: yellow / reflective black  
Handling equipment: forklift  
Impact resistance: high  
Diameter: 108 mm  
Length: 600 mm  
Height: 600 mm  
Foot dimension: 180 × 180 × 10 mm  
Wall thickness: 3 mm  
Weight: 27 kg  
Surface treatment: powder paint  
Suitable use: indoor and outdoor areas



## Straight arched barrier – DP OPP21

Material: steel  
Colour: yellow / reflective black  
Handling equipment: forklift  
Impact resistance: high  
Diameter: 108 mm  
Length: 1200 mm  
Height: 600 mm  
Foot dimension: 180 × 180 × 10 mm  
Wall thickness: 3 mm  
Weight: 34 kg  
Surface treatment: powder paint  
Suitable use: indoor and outdoor areas



## Straight arched barrier – DP OPP22

Material: steel  
Colour: yellow / reflective black  
Handling equipment: forklift  
Impact resistance: high  
Diameter: 108 mm  
Length: 600 mm  
Height: 1200 mm  
Foot dimension: 180 × 180 × 10 mm  
Wall thickness: 3 mm  
Weight: 34 kg  
Surface treatment: powder paint  
Suitable use: indoor and outdoor areas



## **Straight arched barrier – DP OPP23**

Material: steel

Colour: yellow / reflective black

Handling equipment: forklift

Impact resistance: high

Diameter: 108 mm

Length: 1200 mm

Height: 1200 mm

Foot dimension: 180 × 180 × 10 mm

Wall thickness: 3 mm

Weight: 41 kg

Surface treatment: powder paint

Suitable use: indoor and outdoor areas

# Threeside arched barriers

are used especially for the protection of columns and parts of equipment that protrude into the space and could be dangerous during the movement of people and handling equipment in the area



## Threeside arched barrier – DP OPC01

Material: steel  
Colour: yellow / reflective black  
Handling equipment: electric pallet jack  
Impact resistance: increased  
Diameter: 76 mm  
Height: 350 mm  
Width: 700 mm  
Foot dimension: 120 × 120 × 10 mm  
Wall thickness: 3 mm  
Depth: 500 mm  
Column dimensions: 400 mm  
Weight: 20 kg  
Surface treatment: powder paint  
Suitable use: indoor and outdoor areas



## Threeside arched barrier – DP OPC02

Material: steel  
Colour: yellow / reflective black  
Handling equipment: electric pallet jack  
Impact resistance: increased  
Diameter: 76 mm  
Height: 600 mm  
Width: 700 mm  
Foot dimension: 120 × 120 × 10 mm  
Wall thickness: 3 mm  
Depth: 500 mm  
Column dimensions: 400 mm  
Weight: 27 kg  
Surface treatment: powder paint  
Suitable use: indoor and outdoor areas



## Threeside arched barrier – DP OPC03

Material: steel  
Colour: yellow / reflective black  
Handling equipment: electric pallet jack  
Impact resistance: increased  
Diameter: 76 mm  
Height: 350 mm  
Width: 900 mm  
Foot dimension: 120 × 120 × 10 mm  
Wall thickness: 3 mm  
Depth: 500 mm  
Column dimensions: 600 mm  
Weight: 22 kg  
Surface treatment: powder paint  
Suitable use: indoor and outdoor areas





## Threeside arched barrier – DP OPC04

Material: steel  
Colour: yellow / reflective black  
Handling equipment: electric pallet jack  
Impact resistance: increased  
Diameter: 76 mm  
Height: 600 mm  
Width: 900 mm  
Foot dimension: 120 × 120 × 10 mm  
Wall thickness: 3 mm  
Depth: 500 mm  
Column dimensions: 600 mm  
Weight: 28 kg  
Surface treatment: powder paint  
Suitable use: indoor and outdoor areas



## Threeside arched barrier – DP OPC05

Material: steel  
Colour: yellow / reflective black  
Handling equipment: forklift  
Impact resistance: high  
Diameter: 108 mm  
Height: 600 mm  
Width: 1000 mm  
Foot dimension: 180 × 180 × 10 mm  
Wall thickness: 3 mm  
Depth: 600 mm  
Column dimensions: 600 mm  
Weight: 54 kg  
Surface treatment: powder paint  
Suitable use: indoor and outdoor areas



## Threeside arched barrier – DP OPC06

Material: steel  
Colour: yellow / reflective black  
Handling equipment: forklift  
Impact resistance: high  
Diameter: 108 mm  
Height: 1200 mm  
Width: 1000 mm  
Foot dimension: 180 × 180 × 10 mm  
Wall thickness: 3 mm  
Depth: 600 mm  
Column dimensions: 600 mm  
Weight: 81 kg  
Surface treatment: powder paint  
Suitable use: indoor and outdoor areas

# Suspension arched barriers

are used for indoor and outdoor areas and are mainly used to define the space for the movement of handling equipment (hydraulic handling equipment, pallet trucks, etc.)



## Suspension arched barrier – DP OPS01

Material: steel  
Colour: yellow / reflective black  
Handling equipment: electric pallet jack  
Impact resistance: increased  
Diameter: 76 mm  
Height: 600 mm  
Width outer: 450 mm  
inner: 233 mm  
Foot dimension: 120 × 120 × 10 mm  
Wall thickness: 3 mm  
Weight: 13 kg  
Surface treatment: powder paint  
Suitable use: indoor and outdoor areas



## Suspension arched barrier – DP OPS02

Material: steel  
Colour: yellow / reflective black  
Handling equipment: electric pallet jack  
Impact resistance: increased  
Diameter: 76 mm  
Height: 600 mm  
Width outer: 700 mm  
inner: 500 mm  
Foot dimension: 120 × 120 × 10 mm  
Wall thickness: 3 mm  
Weight: 15 kg  
Surface treatment: powder paint  
Suitable use: indoor and outdoor areas



## Suspension arched barrier – DP OPS03

Material: steel  
Colour: yellow / reflective black  
Handling equipment: electric pallet jack  
Impact resistance: increased  
Diameter: 76 mm  
Height: 600 mm  
Width outer: 1000 mm  
inner: 800 mm  
Foot dimension: 120 × 120 × 10 mm  
Wall thickness: 3 mm  
Weight: 17 kg  
Surface treatment: powder paint  
Suitable use: indoor and outdoor areas



## Suspension arched barrier – DP OPS04

Material: steel  
Colour: yellow / reflective black  
Handling equipment: electric pallet jack  
Impact resistance: increased  
Diameter: 76 mm  
Height: 600 mm  
Width outer: 1200 mm  
inner: 1000 mm  
Foot dimension: 120 × 120 × 10 mm  
Wall thickness: 3 mm  
Weight: 18 kg  
Surface treatment: powder paint  
Suitable use: indoor and outdoor areas



## Suspension arched barrier – DP OPS05

Material: steel  
Colour: yellow / reflective black  
Handling equipment: electric pallet jack  
Impact resistance: increased  
Diameter: 76 mm  
Height: 600 mm  
Width outer: 350 mm  
inner: 133 x 133 mm  
Foot dimension: 120 × 120 × 10 mm  
Wall thickness: 3 mm  
Weight: 12 kg  
Surface treatment: powder paint  
Suitable use: indoor and outdoor areas



## Suspension arched barrier – DP OPS06

Material: steel  
Colour: yellow / reflective black  
Handling equipment: electric pallet jack  
Impact resistance: increased  
Diameter: 76 mm  
Height: 600 mm  
Width outer: 800 mm  
inner: 133 x 600 mm  
Foot dimension: 120 × 120 × 10 mm  
Wall thickness: 3 mm  
Weight: 15 kg  
Surface treatment: powder paint  
Suitable use: indoor and outdoor areas

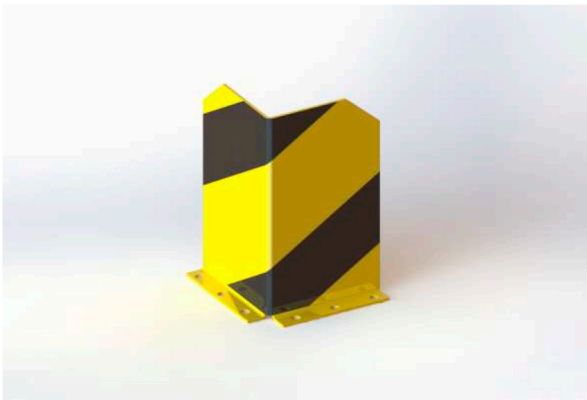


## Suspension arched barrier – DP OPS07

Material: steel  
Colour: yellow / reflective black  
Handling equipment: electric pallet jack  
Impact resistance: increased  
Diameter: 76 mm  
Height: 600 mm  
Width outer: 800 mm  
          inner: 600 x 133 mm  
Foot dimension: 120 x 120 x 10 mm  
Wall thickness: 3 mm  
Weight: 15 kg  
Surface treatment: powder paint  
Suitable use: indoor and outdoor areas

# Rack protectors

Rack Protectors are mainly used to protect the shelves in production halls and warehouses.



## Pallet racking corner protector – DP ORL01

Material: steel  
Colour: yellow / reflective black  
Handling equipment: forklift  
Impact resistance: high  
Height: 400 mm  
Product dimensions: 200 x 200 mm  
Metal sheet thickness: 5 mm  
Weight: 7 kg  
Surface treatment: powder paint  
Suitable use: indoor and outdoor areas  
Possibility of disposal: recycling



## Pallet racking corner protector – DP ORL02

Material: steel  
Colour: yellow / reflective black  
Handling equipment: forklift  
Impact resistance: high  
Height: 600 mm  
Product dimensions: 200 x 200 mm  
Metal sheet thickness: 5 mm  
Weight: 10 kg  
Surface treatment: powder paint  
Suitable use: indoor and outdoor areas  
Possibility of disposal: recycling

## Pallet racking corner protector – DP ORL03



Material: steel  
Colour: yellow / reflective black  
Handling equipment: forklift  
Impact resistance: high  
Height: 1200 mm  
Product dimensions: 200 x 200 mm  
Metal sheet thickness: 5 mm  
Weight: 20 kg  
Surface treatment: powder paint  
Suitable use: indoor and outdoor areas  
Possibility of disposal: recycling

# PROTECTIVE POSTS

We make the protective posts from high-quality steel and provide them with anti-corrosion coating, which ensures the maximal service life of the product. The surface of the barrier has 80 - 120 microns of the powder color RAL1023 (traffic yellow) and is equipped with reflective hatching, which allows to improve the visibility even in the dark. They are mainly used to define the space for the movement of handling equipment (such as pallet trucks, sack trucks and others) or to demarcate the pedestrian zones within the premises. In combination with other types of barriers, you can create a comprehensive system of protecting the equipment and people throughout your company's premises.





## Protective post – DP LGS01

Material: steel  
Colour: yellow  
Handling equipment: electric pallet jack  
Impact resistance: increased  
Diameter: 76 mm  
Height: 1000 mm  
Wall thickness: 3 mm  
Foot dimension: 120 × 120 × 10 mm  
Weight: 8 kg  
Surface treatment: powder paint  
Suitable use: indoor and outdoor areas



## Protective post – DP LGS02

Material: steel  
Colour: yellow  
Handling equipment: forklift  
Impact resistance: high  
Diameter: 108 mm  
Height: 1000 mm  
Wall thickness: 3 mm  
Foot dimension: 180 × 180 × 10 mm  
Weight: 14 kg  
Surface treatment: powder paint  
Suitable use: indoor and outdoor areas



## Protective post – DP LGS03

Material: steel  
Colour: yellow  
Handling equipment: heavy forklift  
Impact resistance: extreme  
Diameter: 159 mm  
Height: 700 mm  
Wall thickness: 3 mm  
Foot dimension: 220 × 220 × 10 mm  
Weight: 16 kg  
Surface treatment: powder paint  
Suitable use: indoor and outdoor areas





## Protective post – DP OS01

Material: steel  
Colour: yellow / reflective black  
Handling equipment: manual handling equipment  
Impact resistance: basic  
Diameter: 60 mm  
Height: 1000 mm  
Wall thickness: 3 mm  
Foot dimension: 120 × 120 × 10 mm  
Weight: 6 kg  
Surface treatment: powder paint  
Suitable use: indoor and outdoor areas



## Protective post – DP OS02

Material: steel  
Colour: yellow / reflective black  
Handling equipment: electric pallet jack  
Impact resistance: increased  
Diameter: 76 mm  
Height: 600 mm  
Wall thickness: 3 mm  
Foot dimension: 120 × 120 × 10 mm  
Weight: 5 kg  
Surface treatment: powder paint  
Suitable use: indoor and outdoor areas



## Protective post – DP OS03

Material: steel  
Colour: yellow / reflective black  
Handling equipment: electric pallet jack  
Impact resistance: increased  
Diameter: 76 mm  
Height: 1200 mm  
Wall thickness: 3 mm  
Foot dimension: 120 × 120 × 10 mm  
Weight: 9 kg  
Surface treatment: powder paint  
Suitable use: indoor and outdoor areas



## Protective post – DP OS04

Material: steel  
Colour: yellow / reflective black  
Handling equipment: forklift  
Impact resistance: high  
Diameter: 108 mm  
Height: 600 mm  
Wall thickness: 3 mm  
Foot dimension: 180 × 180 × 10 mm  
Weight: 9 kg  
Surface treatment: powder paint  
Suitable use: indoor and outdoor areas



## Protective post – DP OS05

Material: steel  
Colour: yellow / reflective black  
Handling equipment: forklift  
Impact resistance: high  
Diameter: 108 mm  
Height: 1200 mm  
Wall thickness: 3 mm  
Foot dimension: 180 × 180 × 10 mm  
Weight: 17 kg  
Surface treatment: powder paint  
Suitable use: indoor and outdoor areas



## Protective post – DP OS07

Material: steel  
Colour: yellow / reflective black  
Handling equipment: heavy forklift  
Impact resistance: extreme  
Diameter: 159 mm  
Height: 600 mm  
Wall thickness: 3 mm  
Foot dimension: 220 × 220 × 10 mm  
Weight: 14 kg  
Surface treatment: powder paint  
Suitable use: indoor and outdoor areas



## Protective post – DP OS08

Material: steel  
Colour: yellow / reflective black  
Handling equipment: heavy forklift  
Impact resistance: extreme  
Diameter: 159 mm  
Height: 1200 mm  
Wall thickness: 3 mm  
Foot dimension: 220 × 220 × 10 mm  
Weight: 24 kg  
Surface treatment: powder paint  
Suitable use: indoor and outdoor areas

# GUARDRAIL

We make the guardrails from high-quality steel and provide them with anti-corrosion coating, which ensures the maximal service life of the product. The surface of the barrier has 80 - 120 microns of the powder color RAL1023 (traffic yellow) and is equipped with reflective hatching, which allows to improve the visibility even in the dark. We produce the guardrail in two versions - straight or corner.

In combination with other types of barriers, you can create a comprehensive system of protecting the equipment and people throughout your company's premises.



# Modular guardrail



## End steel post – DPK 50K

Material: steel  
Colour: yellow  
Handling equipment: electric pallet jack  
Impact resistance: increased  
Height: 500 mm  
Column dimensions: 100 x 100 mm  
Wall thickness: 3 mm  
Foot dimensions: 180 x 180 x 10 mm  
Surface treatment: powder paint  
Suitable use: indoor and outdoor areas



## Central steel post – DPK 50P

Material: steel  
Colour: yellow  
Handling equipment: electric pallet jack  
Impact resistance: increased  
Height: 500 mm  
Column dimensions: 100 x 100 mm  
Wall thickness: 3 mm  
Foot dimensions: 180 x 180 x 10 mm  
Surface treatment: powder paint  
Suitable use: indoor and outdoor areas



## Angle steel post – DPK 50R

Material: steel  
Colour: yellow  
Handling equipment: electric pallet jack  
Impact resistance: increased  
Height: 500 mm  
Column dimensions: 100 x 100 mm  
Wall thickness: 3 mm  
Foot dimensions: 180 × 180 × 10 mm  
Surface treatment: powder paint  
Suitable use: indoor and outdoor areas



## End steel post – DPK 110K

Material: steel  
Colour: yellow  
Handling equipment: electric pallet jack  
Impact resistance: increased  
Height: 1100 mm  
Column dimensions: 100 x 100 mm  
Wall thickness: 3 mm  
Foot dimensions: 180 × 180 × 10 mm  
Surface treatment: powder paint  
Suitable use: indoor and outdoor areas



## Central steel post – DPK 110P

Material: steel  
Colour: yellow  
Handling equipment: electric pallet jack  
Impact resistance: increased  
Height: 1100 mm  
Column dimensions: 100 x 100 mm  
Wall thickness: 3 mm  
Foot dimensions: 180 × 180 × 10 mm  
Surface treatment: powder paint  
Suitable use: indoor and outdoor areas



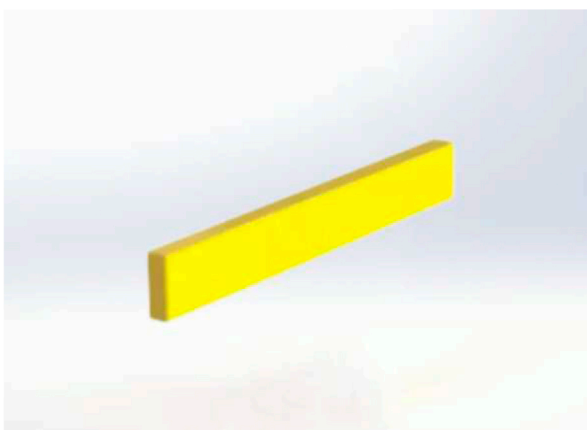
## Angle steel post – DPK 110R

Material: steel  
Colour: yellow  
Handling equipment: electric pallet jack  
Impact resistance: increased  
Height: 1100 mm  
Column dimensions: 100 x 100 mm  
Wall thickness: 3 mm  
Foot dimensions: 180 × 180 × 10 mm  
Surface treatment: powder paint  
Suitable use: indoor and outdoor areas



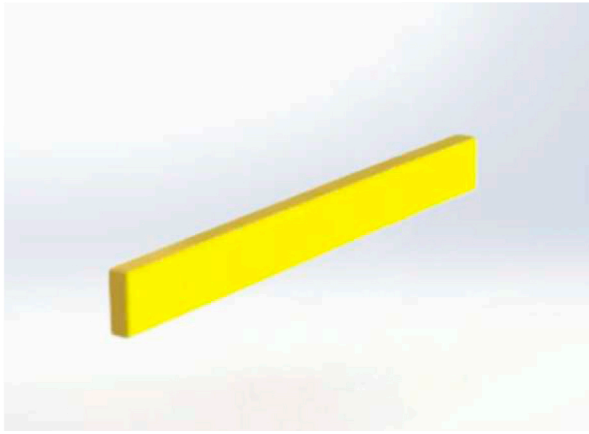
## Steel crossbar, 500 mm – DPK V50

Material: steel  
Colour: yellow  
Handling equipment: electric pallet jack  
Impact resistance: increased  
Length: 500 mm  
Height: 140 mm  
Width: 80 mm  
Wall thickness: 3 mm  
Surface treatment: powder paint  
Suitable use: indoor and outdoor areas



## Steel crossbar, 1000 mm – DPK V100

Material: steel  
Colour: yellow  
Handling equipment: electric pallet jack  
Impact resistance: increased  
Length: 1000 mm  
Height: 140 mm  
Width: 80 mm  
Wall thickness: 3 mm  
Surface treatment: powder paint  
Suitable use: indoor and outdoor areas



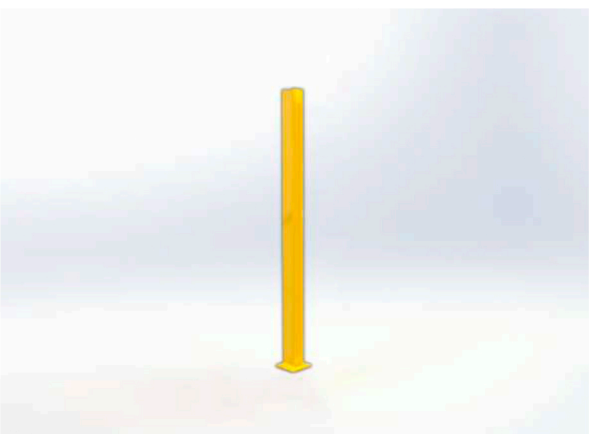
## Steel crossbar, 1500 mm – DPK V150

Material: steel  
Colour: yellow  
Handling equipment: electric pallet jack  
Impact resistance: increased  
Length: 1500 mm  
Height: 140 mm  
Width: 80 mm  
Wall thickness: 3 mm  
Surface treatment: powder paint  
Suitable use: indoor and outdoor areas



## Steel crossbar, 2000 mm – DPK V200

Material: steel  
Colour: yellow  
Handling equipment: electric pallet jack  
Impact resistance: increased  
Length: 2000 mm  
Height: 140 mm  
Width: 80 mm  
Wall thickness: 3 mm  
Surface treatment: powder paint  
Suitable use: indoor and outdoor areas



## Steel post, 2000 mm – SH-02

Material: steel  
Colour: yellow  
Handling equipment: pallet truck  
Impact resistance: increased  
Height: 2000 mm  
Column dimensions: HEB 100 x 100 mm  
Web thickness: 6,0 mm  
Flange thickness: 10,0 mm  
Foot dimensions: 180 x 180 x 10 mm  
Weight: 42,87 kg  
Surface treatment: powder paint  
Suitable use: indoor and outdoor areas





## Guardrail section, 1000 mm – MVZ-01

Material: steel  
Colour: yellow  
Handling equipment: pallet truck  
Impact resistance: increased  
Height: 1880 mm  
Square pipes: 50 x 50 x 2 x 984 mm  
Round tubes: 28 x 2 x 1680 mm  
Connecting plates: 150 x 50 x 5 mm  
Weight: 22,82 kg  
Surface treatment: powder paint  
Suitable use: indoor and outdoor areas



## Guardrail section, 2000 mm – MVZ-02

Material: steel  
Colour: yellow  
Handling equipment: pallet truck  
Impact resistance: increased  
Height: 1880 mm  
Square pipes: 50 x 50 x 2 x 1984 mm  
Round tubes: 28 x 2 x 1680 mm  
Connecting plates: 150 x 50 x 5 mm  
Weight: 46,21 kg  
Surface treatment: powder paint  
Suitable use: indoor and outdoor areas

# Straight guardrail



## Straight guardrail – DP BT01

Material: steel  
Colour: yellow / reflective black  
Handling equipment: manual handling equipment  
Impact resistance: basic  
Diameter: 60 mm  
Length: 500 mm  
Height: 1100 mm  
Wall thickness: 3 mm  
Foot dimension: 120 × 120 × 10 mm  
Weight: 14 kg  
Surface treatment: powder paint  
Suitable use: indoor and outdoor areas



## Straight guardrail – DP BT02

Material: steel  
Colour: yellow / reflective black  
Handling equipment: manual handling equipment  
Impact resistance: basic  
Diameter: 60 mm  
Length: 1000 mm  
Height: 1100 mm  
Wall thickness: 3 mm  
Foot dimension: 120 × 120 × 10 mm  
Weight: 19 kg  
Surface treatment: powder paint  
Suitable use: indoor and outdoor areas



## **Straight guardrail – DP BT03**

Material: steel  
Colour: yellow / reflective black  
Handling equipment: manual handling equipment  
Impact resistance: basic  
Diameter: 60 mm  
Length: 1500 mm  
Height: 1100 mm  
Wall thickness: 3 mm  
Foot dimension: 120 × 120 × 10 mm  
Weight: 24 kg  
Surface treatment: powder paint  
Suitable use: indoor and outdoor areas



## **Straight guardrail – DP BT04**

Material: steel  
Colour: yellow / reflective black  
Handling equipment: manual handling equipment  
Impact resistance: basic  
Diameter: 60 mm  
Length: 2000 mm  
Height: 1100 mm  
Wall thickness: 3 mm  
Foot dimension: 120 × 120 × 10 mm  
Weight: 28 kg  
Surface treatment: powder paint  
Suitable use: indoor and outdoor areas

# Corner guardrail



## Corner guardrail – DP BT05

Material: steel  
Colour: yellow / reflective black  
Handling equipment: manual handling equipment  
Impact resistance: basic  
Diameter: 60 mm  
Length: 750 mm + 750 mm / 90°  
Height: 1100 mm  
Wall thickness: 3 mm  
Foot dimension: 120 × 120 × 10 mm  
Weight: 22 kg  
Surface treatment: powder paint  
Suitable use: indoor and outdoor areas



## Corner guardrail – DP BT06

Material: steel  
Colour: yellow / reflective black  
Handling equipment: manual handling equipment  
Impact resistance: basic  
Diameter: 60 mm  
Length: 600 mm + 600 mm / 135°  
Height: 1100 mm  
Wall thickness: 3 mm  
Foot dimension: 120 × 120 × 10 mm  
Weight: 22 kg  
Surface treatment: powder paint  
Suitable use: indoor and outdoor areas